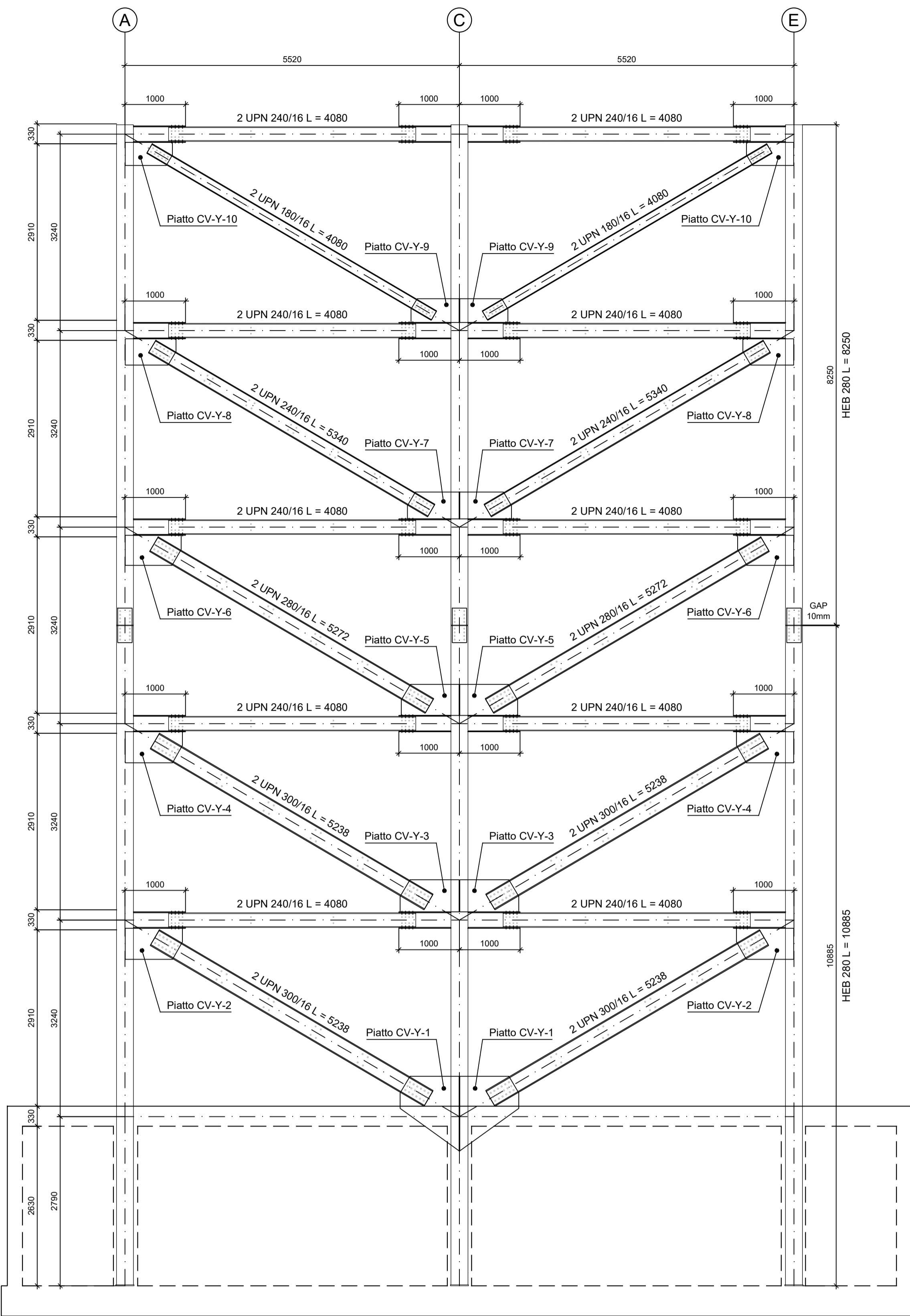
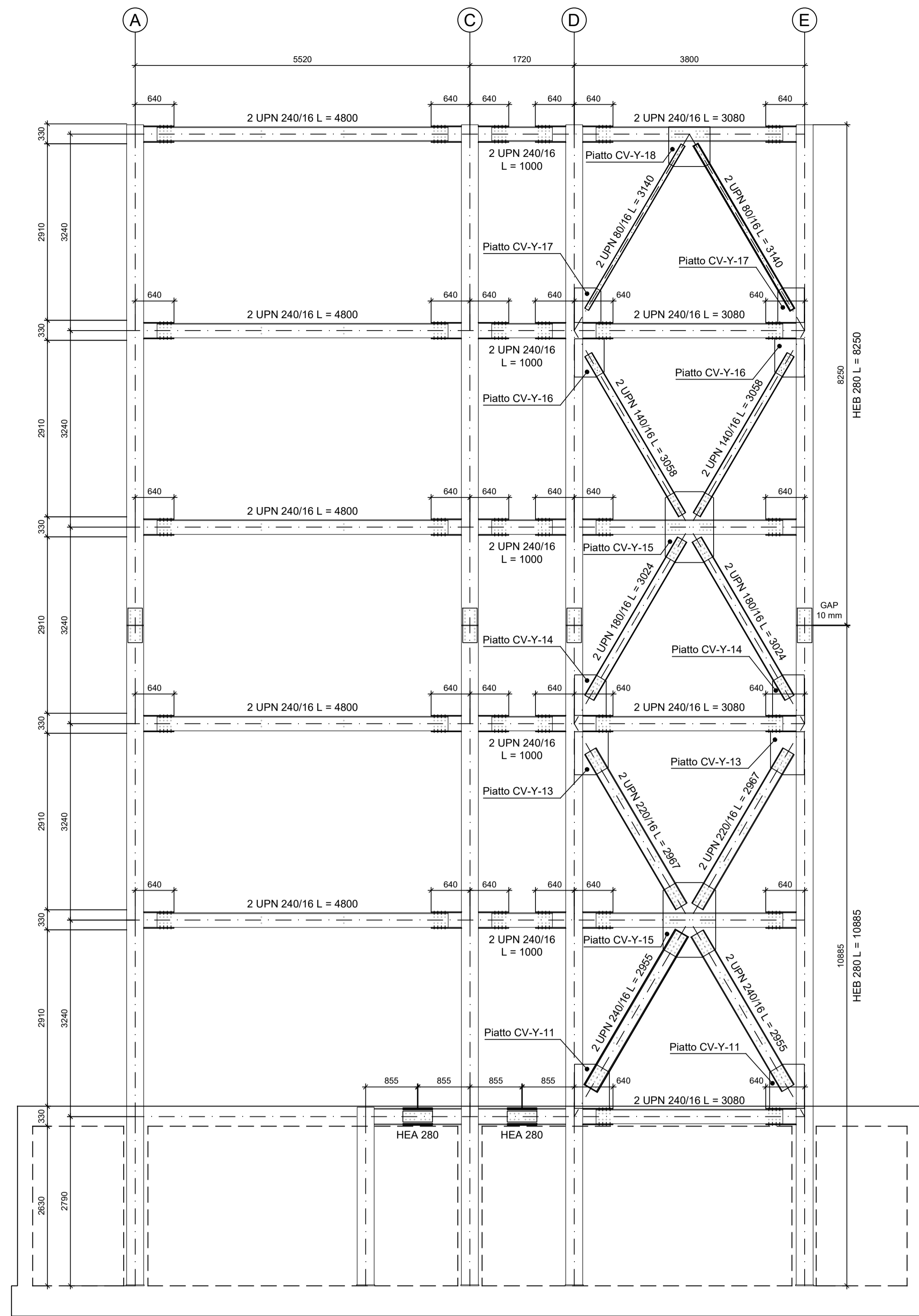


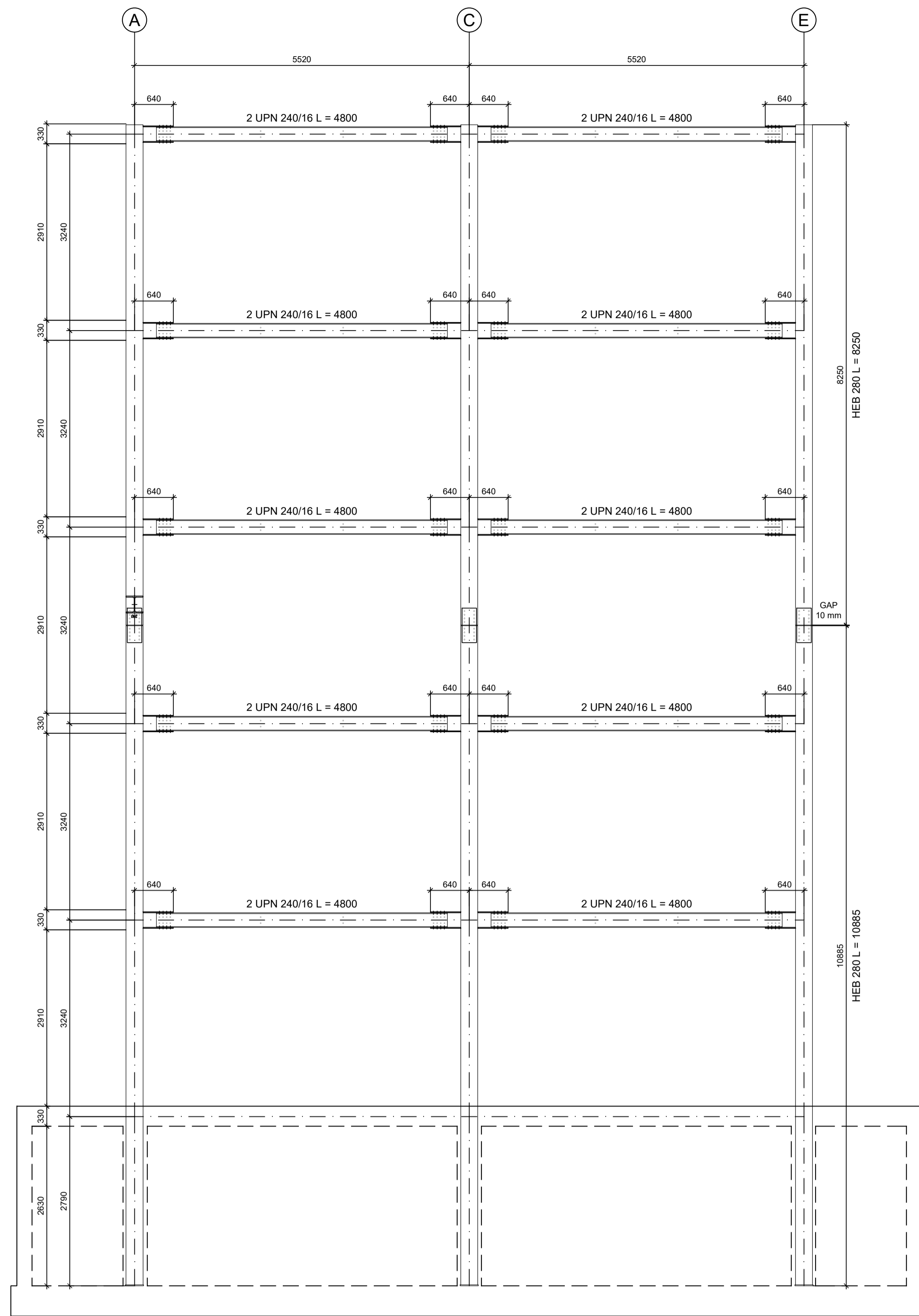
TELAIO "1" E "10" - Scala 1:50



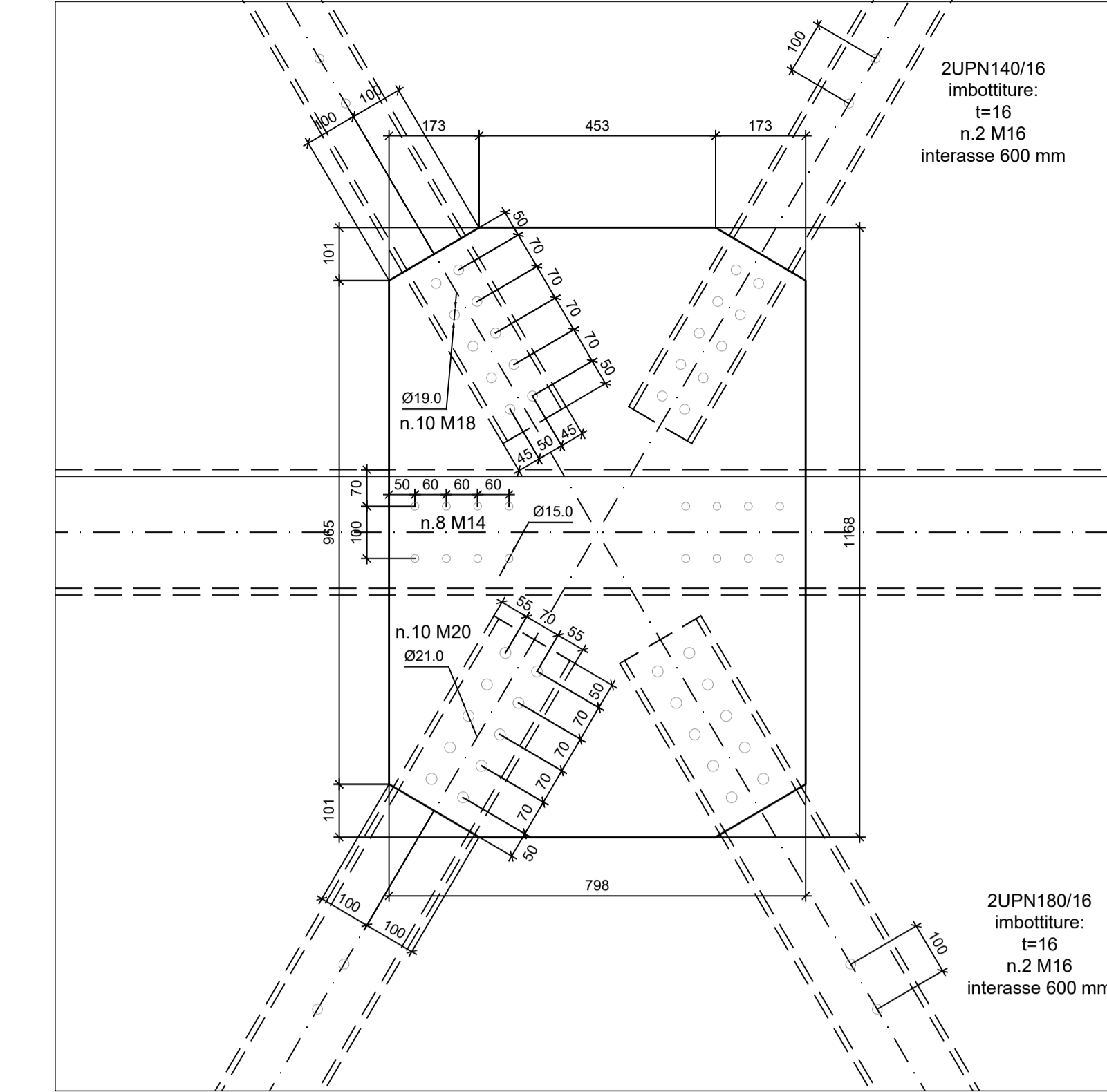
TELAIO "3", "4", "7" E "8" - Scala 1:50



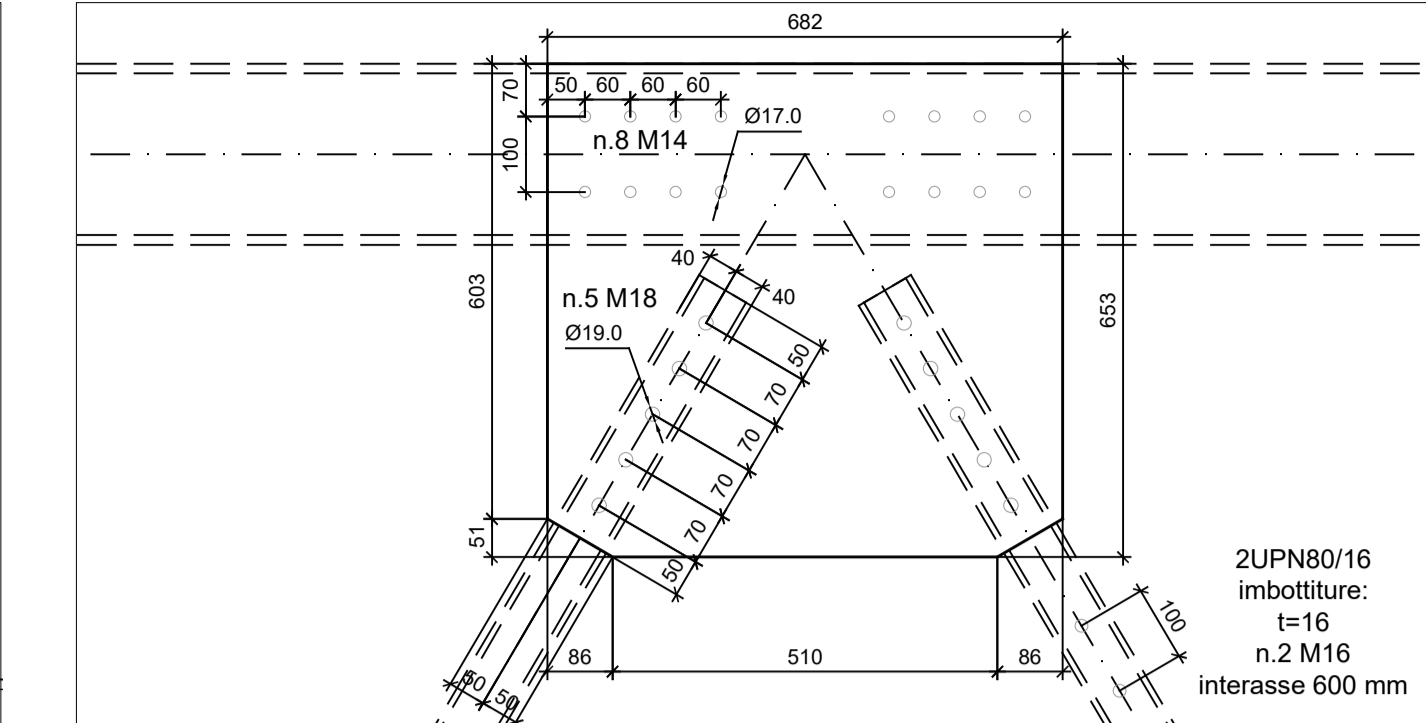
TELAIO "2", "5", "6" E "9" - Scala 1:50



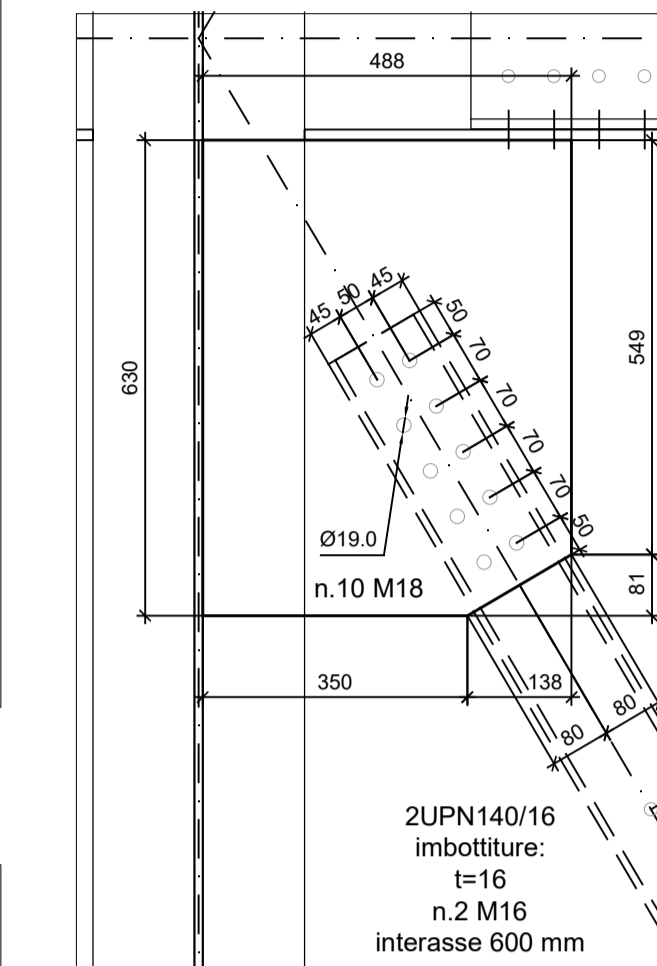
PIATTO "CV-Y-15" t=16 - Scala 1:10



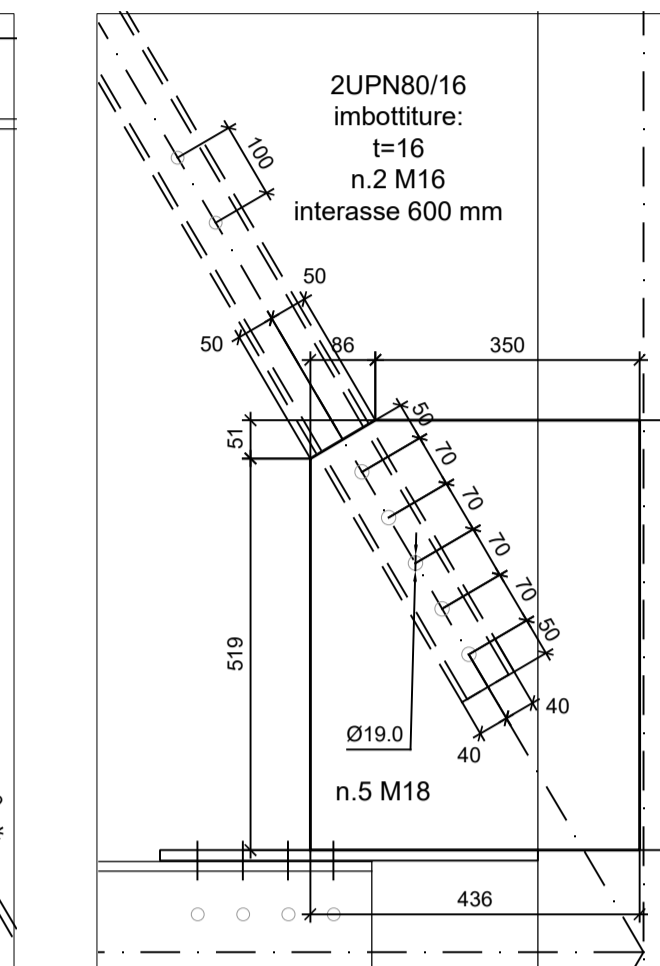
PIATTO "CV-Y-18" t=16 - Scala 1:10



PIATTO "CV-Y-17" t=16 - Scala 1:10



PIATTO "CV-Y-16" t=16 - Scala 1:10



IMBOTTITURE TRAVI COMPOSTE 2UPN/16 t=16 - Scala 1:10

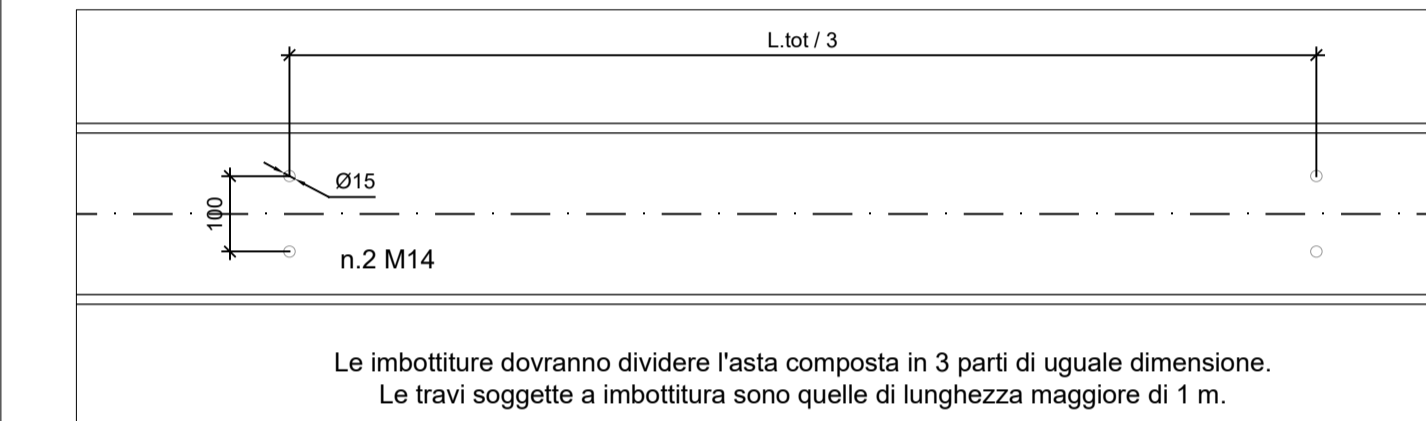


Table with 2 columns: OPERE IN CARPENTERIA METALLICA and OPERE IN CEMENTO ARMATO. Lists materials and specifications for steel and reinforced concrete work.

NOTE GENERALI

- General notes regarding material approval, design compliance, and welding standards.

NOTE SPECIFICHE - SALDATURE

- Specific notes regarding welding procedures, including shop welding and field welding requirements.

A.P.E.S. s.c.p.a. EDILIZIA PISANA EDILIZIA SOCIALE

oggetto: PROGETTO PER LA REALIZZAZIONE DI N°33 ALLOGGI DI EDILIZIA RESIDENZIALE PUBBLICA IN PISA

ubicazione: COMUNE DI PISA LOC. SANT'ERMETE - VIA EMILIA

proprietà: Comune di Pisa finanziamento:

codice Cup: protocollo progetti:

Progettisti: RTP Ing. Letizia Ortensio resp. del proc.: Dott. Ing. Chiara Cristiani

Ing. Pellegrino Jacopo, Ing. Tamagnini Nicola fase prog.: ESECUTIVO

Ing. Filippo Lenzi

redatto: data: 24 novembre 2017

a) RTP progettisti 24 novembre 2017

b) RTP progettisti 16 dicembre 2017

c) Revisione 1

disegno: TELAI DIREZIONE Y

scala: 1:50 - 1:10 tavola: S 0 5 a

